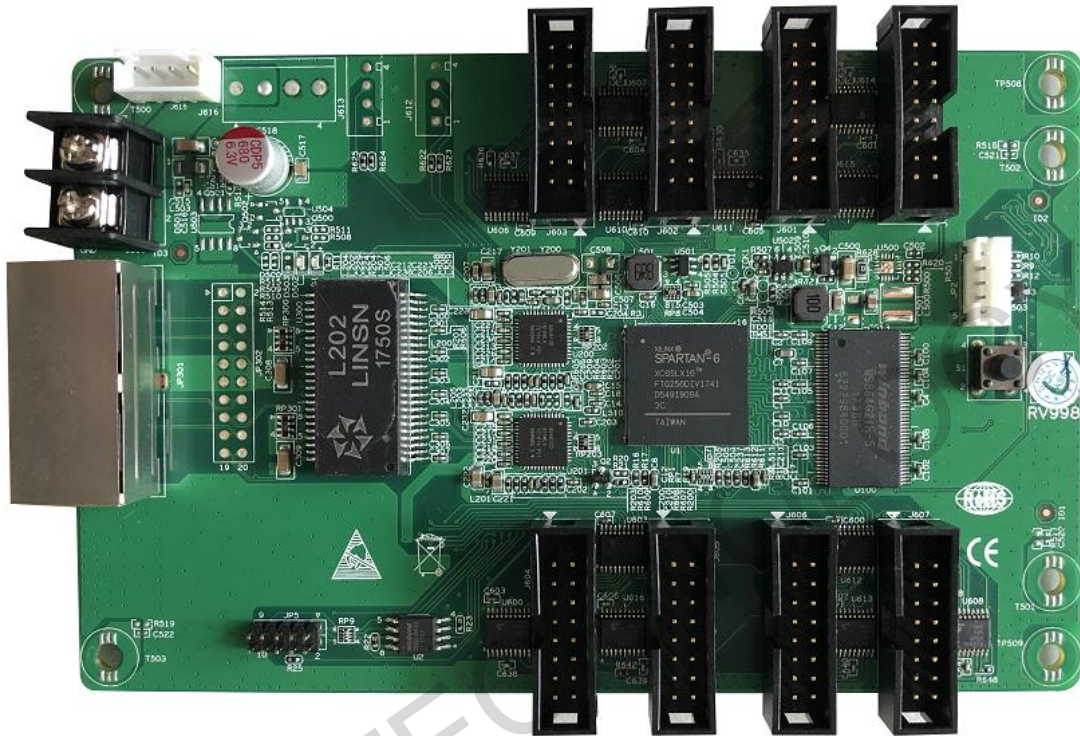


# RV998

V1.1 Jan 2018



## 1. Functions and features

RV998 is a standardize product for LED screen manufacturer which doesn't require extra hub card and is compatible with RV908 with same size. It also equals to RV901 plus a hub75-type hub card (supports up to 32 scan mode). It has following functions and features:

Official website: [www.linsn.com](http://www.linsn.com)

Add: Floor 15&16, Jiajiahao Business Building, No. 10168, Shennan Blvd,  
Nanshan District, Shenzhen

Tel: +86-0755-86183590/ 4008836968

- 1) 8 hub-75 16-pin connectors on board (supports 32 scan mode) , no extra hub card needed;
- 2) Single card maximum support 256X256 or 128X512 pixels;
- 3) Single card can output 16 groups RGB data;
- 4) Supports 138 decode, 595 serial decode and so on;
- 5) Supports pixel-by-pixel brightness and color calibration; and single-card color space conversion;
- 6) High refresh rate and high grey level;
- 7) Supports general driver ICs and most of the PWM driver ICs;
- 8) Supports fetching back RCG file;
- 9) Support network cable BER test;
- 10) In line with RoHS standards;
- 11) In line with EU standards CE-EMC class B;

Official website: [www.linsn.com](http://www.linsn.com)

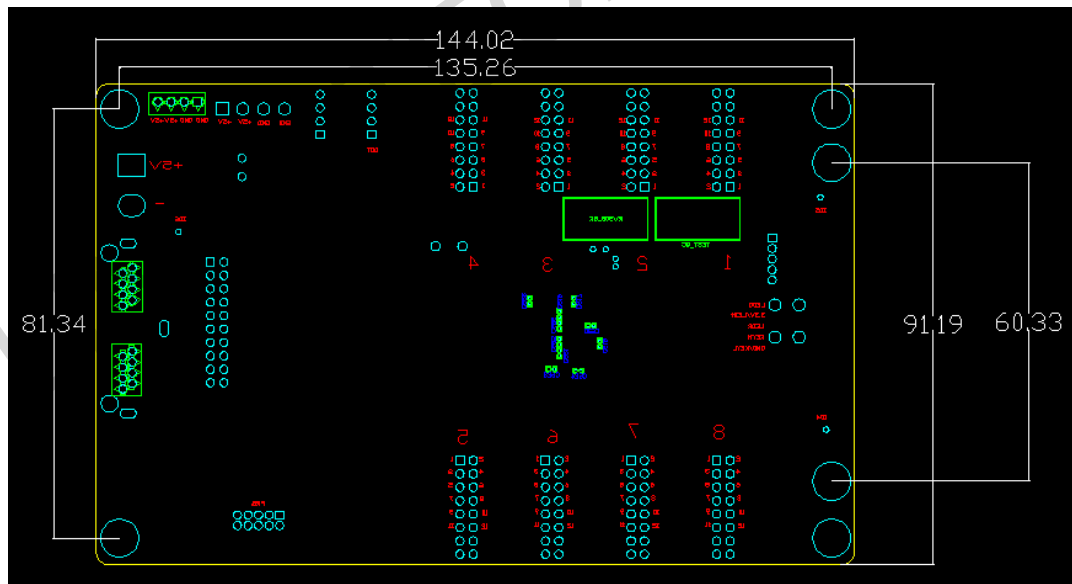
Add: Floor 15&16, Jiajiahao Business Building, No. 10168, Shennan Blvd,  
Nanshan District, Shenzhen

Tel: +86-0755-86183590/ 4008836968

## 2. RV998 Pinout

<b>R1</b>	<b>1</b>	<b>2</b>	<b>G1</b>
<b>B1</b>	<b>3</b>	<b>4</b>	<b>GND</b>
<b>R2</b>	<b>5</b>	<b>6</b>	<b>G2</b>
<b>B2</b>	<b>7</b>	<b>8</b>	<b>E</b>
<b>A</b>	<b>9</b>	<b>10</b>	<b>B</b>
<b>C</b>	<b>11</b>	<b>12</b>	<b>D</b>
<b>CLK</b>	<b>13</b>	<b>14</b>	<b>LAT</b>
<b>OE</b>	<b>15</b>	<b>16</b>	<b>GND</b>

## 3. Dimensions



Official website: [www.linsn.com](http://www.linsn.com)

Add: Floor 15&16, Jiajiahao Business Building, No. 10168, Shennan Blvd,  
Nanshan District, Shenzhen

Tel: +86-0755-86183590/ 4008836968

#### 4. Working Conditions

Rated voltage (V)	5	max	5.5	Min	4.5
Rated current (A)	0.80	max	0.87	Min	0.73
Rated power consumption (W)	4.0	max	4.8	Min	3.3
Working temperature (°C)	-20°C ~ 70°C				
Working humidity (%)	0% ~ 95%				

**END**

Official website: [www.linsn.com](http://www.linsn.com)

Add: Floor 15&16, Jiajiahao Business Building, No. 10168, Shennan Blvd,  
Nanshan District, Shenzhen

Tel: +86-0755-86183590/ 4008836968