



Product Specifications

Single color control card E64

V2.0 20170901

Overview

For signage, store, car, outdoor advertising and other information display, Huidu technology launched our E-series control card, for chain, LAN communications, and cluster management.

E64 is a series of E-series control card, E, the network port, through the network cable to update the program. In addition, there are USB interface, but also through the U disk to update the program. Low cost, cost-effective, simple software interface, easy to operate, better and rich display effect support for a variety of monochrome display.

Application software: Huidu technology sixth generation display operating software HD2016.

Features

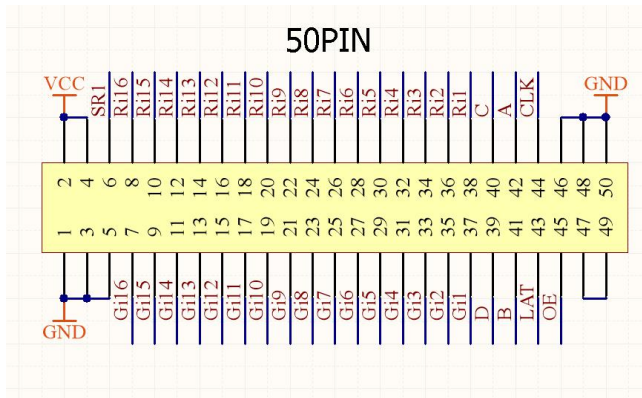
| Content | Performance |
|----------------|--|
| Support module | Single Color/ Dual Color /Tricolor conventional scanning methods |
| Control range | Single color: 1024*256 (Widest 2048) Dual color: 512*256 Tricolor: 672*128 |
| FLASH Capacity | 8M Byte |

| | |
|--------------------|---|
| Communication Port | U-Disk、 Ethernet |
| Support Colorful | Full-color module can display red, green, blue, yellow, purple, green, white |
| Program Quantity | Max 1000pcs Programs. Can play by time section or control by buttons. |
| Area Quantity | 20 areas with separate zone, and separated special effects and border |
| Display Showing | Text、 Picture、 3DText、 Animation (SWF)、 Excel、 Timing 、 Temperatures (humidity)、 Count 、 Lunar calendar |
| Display | Sequence display, button switch, remote control |
| Display effect | <p>1、 Text 、 Picture, Time, Timing 、 Temperature or temperature and humidity (external module required) Display</p> <p>2、 Support program border, regional border settings, custom borders</p> <p>3、 A variety of action display</p> <p>4、 More than 40 kinds of text effects display</p> |

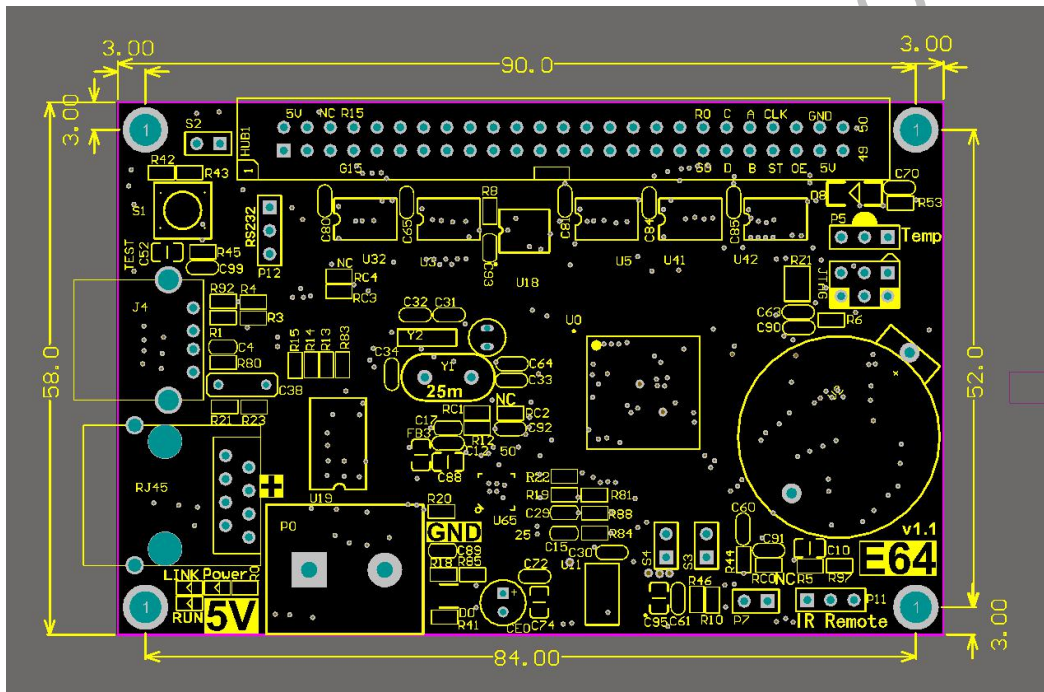
| | |
|-------------------------|--|
| | <p>5、 Support for simple animations word</p> <p>6、 Support outline fonts, stroke fonts and other settings</p> <p>7、 Support for regional text background settings</p> <p>8、 Support Excel form directly adding</p> |
| Clock function | <p>1、 Support Digital Clock/ Dial Clock / Lunar Time/</p> <p>2、 Countdown /Count up, Button Countdown/ Count up</p> <p>3、 The font、 size、 color and position can be set freely</p> <p>4、 Support multiple time zones</p> |
| Extended Equipment | Temperatures、 Humidity、 IR Remoter、 Photosensitive sensors etc. |
| Automatic switch screen | Support timer switch machine |
| Dimming | Support three brightness adjustment mode |

Port Definition

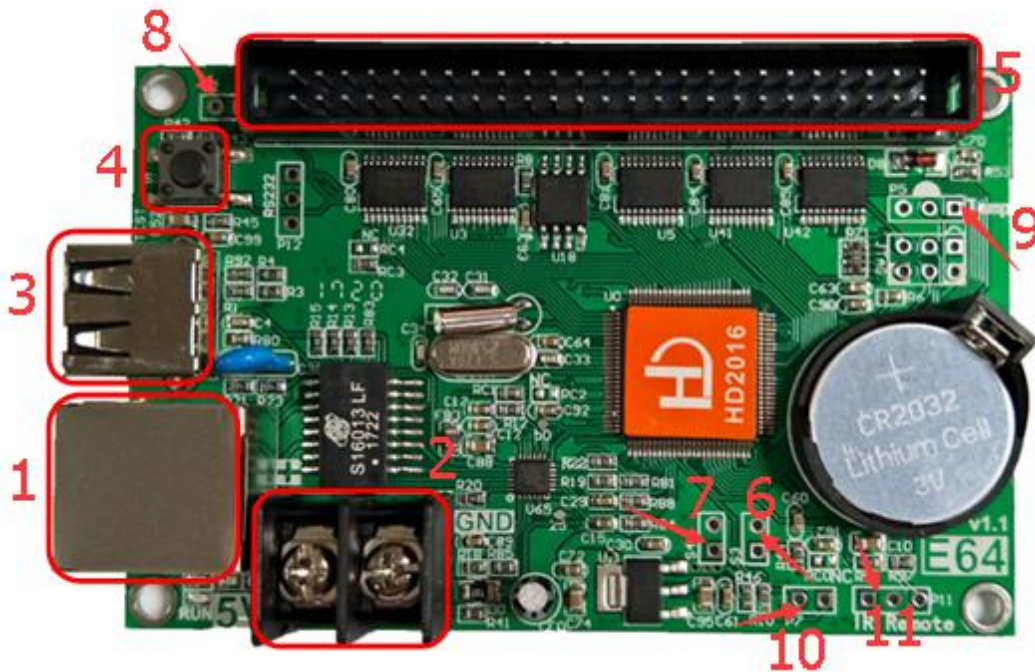
The control board has 1 OF 50PIN,



Setup Diagram



HD-E64 Photo



- ①: Connect the computer through Ethernet to send parameters and programs;
- ②: Power connector, connect 5V power supply;
- ③: USB ports, Updated program by U-disk;
- ④: Test button, click to switch screen test status;
- ⑤: Control board has 1 OF 50PIN, connect the display;
- ⑥: S3, Connect the point switch, switch the previous program, timer reset, count down;
- ⑦: S4, Connect the point switch, program control, timing pause, count reset;
- ⑧: S2, Connect the point switch, switch to the next program, the timer starts, count plus;

⑨: P5, Connect the temperature/humidity sensor;

⑩: P7, Connect the brightness sensor;

⑪: P11, Connect the IR, by remote control.

Technical Parameters

| | Minimum | Typical value | Maximum |
|--------------------------------|---------|---------------|---------|
| Rated voltage (V) | 4.2 | 5.0 | 5.5 |
| Storage temperature(°C) | -40 | 25 | 105 |
| Work environment humidity (°C) | -40 | 25 | 80 |
| Work environment humidity (%) | 0.0 | 30 | 95 |

Precautions

- 1) To ensure that the control card is stored during normal operation, make sure the battery on the control card is not loose;
- 2) In order to ensure the long-term stable operation of the system; please try to use the standard 5V power supply voltage.