

Product Specifications  
Led control card HD-U60 (USB Port)



V2.0 20170901

## Overview

---

For signage, store, outdoor advertising and other information display, HUIDU technology launched our U-disk series control card, updated the display programs by the USB port.

U60 is U-disk series control card, through the USB port to update the program. Cost-effective, simple software to operate, better and rich display effects, support for a variety of monochrome display.

Application software: HD2018

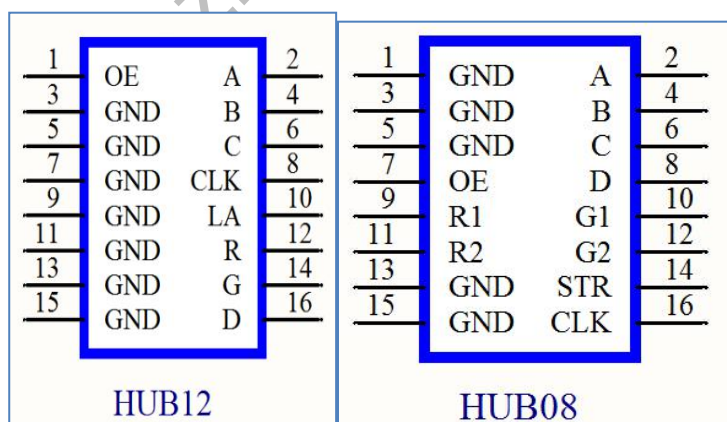
## Features

---

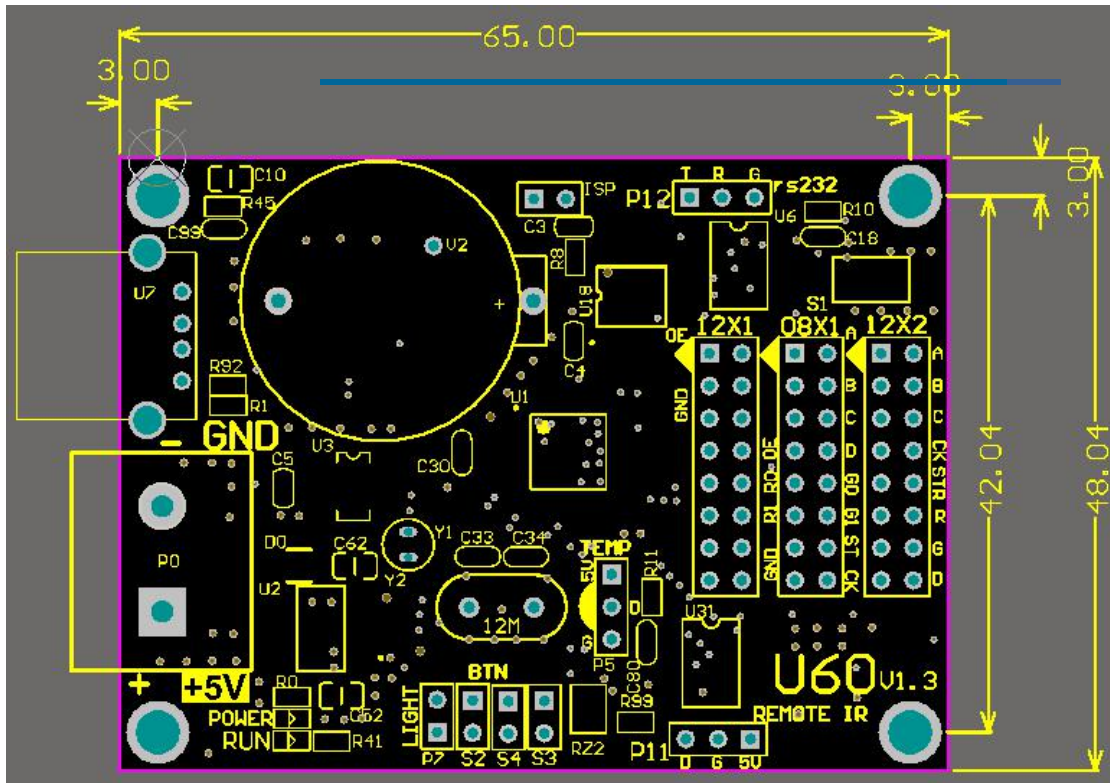
| Content                     | Parameters  |
|-----------------------------|---|
| Support module              | Single color/ Dual color/Tricolor   |
| Control range<br>Resolution | Single color: 512W*32H<br>Dual color: 256W*32H<br>Tricolor: 160W*32H  |
| FLASH Capacity              | 2M Byte   |
| Communication Port          | U-Disk  |
| HUB signal                  | 2HUB12,1 HUB08  |
| Program Quantity            | 1000pcs Programs. also can change program by button or remote if weld sensor (Remoter can select 1-999 Programs)  |
| Area Quantity               | 20 areas with separate zone, and separated special effects and border   |
| Display Showing             | Text、 Animation word、 Time、 Count、 Lunar calendar   |
| Display effects             | 1.Support all languages(Software :HD2018)<br>2.Support 7 color effects and Gray level (HD-U62/U63/U64)<br>3. Border functions of Program border, area border and Custom |

|                         |  |
|-------------------------|--|
| Display effect          | <p>design border.</p> <p>4.Add Countdown /Count up, Button Countdown / Count up</p> <p>5.Add Text Rotation of 90° 、 180° 、 270° for display</p> <p>Text function of Hollow、 Stroke etc</p> <p>6.Add payment collection function</p> <p>7.Updated program by U-disk</p> <p>8. More than 200 types showing effects</p> <p>9.Support Second develop SDK</p> |
| Clock function          | <p>1. Support Digital Clock/ Dial Clock / Lunar Time/</p> <p>2.Countdown /Count up, Button Countdown / Count up</p> <p>3. The font、 size、 color and position can be set freely</p> <p>4. Support multiple time zones</p>   |
| Extended Equipment      | Remote function、 temperature、 humidity、 brightness etc. (If weld sensor) .Remoter can select1-999 Programs   |
| Automatic switch screen | Support switch on/off display automatically  |
| Brightness adjustment   | Brightness setting by Custom、 Automatic(weld sensor)、 by time period regulation  |

## Port Definition

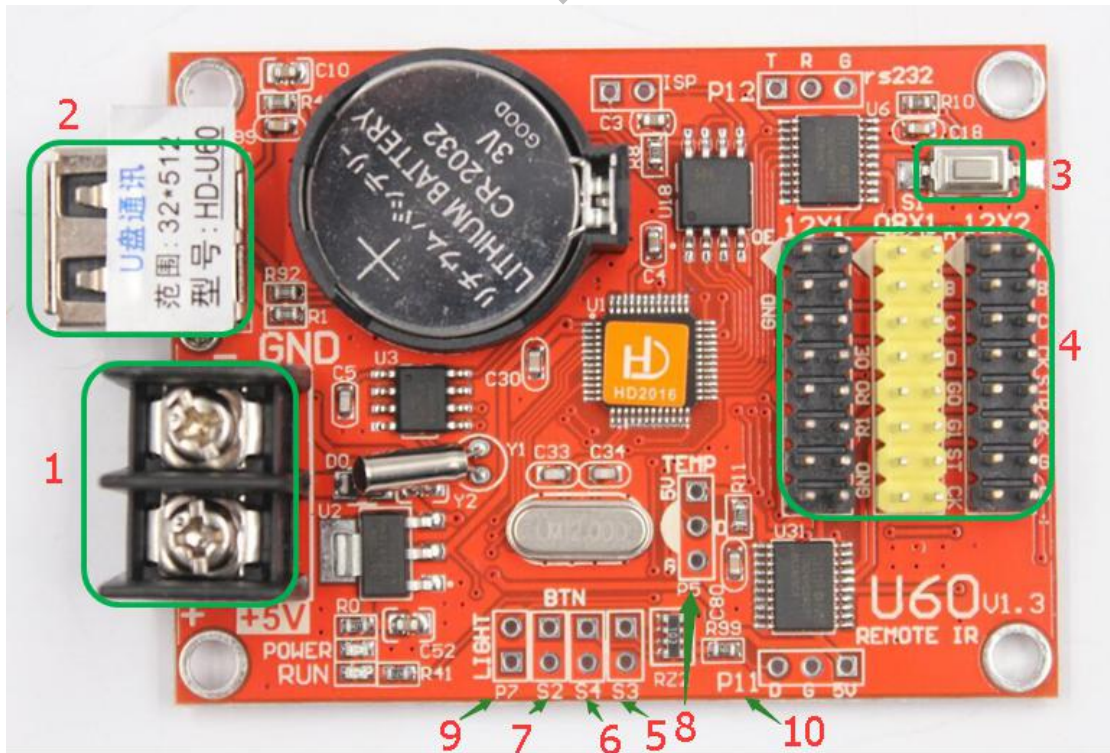


## Setup Diagram



HD-U60

Photo



①: Power connector, connect 5V power supply;

- ②: USB ports, Updated program by U-disk;
- ③: Test button, click to switch screen test status;
- ④: 2HUB12, 1HUB08, connect the display;
- ⑤: S3, connect the point switch, switch the previous program, timer reset, count down;
- ⑥: S4, connect the point switch, program control, time-out, count reset;
- ⑦: S2, connect the point switch, switch the next program, the timer starts, count plus;
- ⑧: P5, connect temperature / humidity sensor;
- ⑨: P7, connect the brightness sensor;
- ⑩: P11, connected to the infrared receiver, with the remote control.

## Technical Parameters

---

|                                   | Minimum | Typical value | Maximum |
|-----------------------------------|---------|---------------|---------|
| Rated voltage (V)                 | 4.2     | 5.0           | 5.5     |
| Storage temperature(°C)           | -40     | 25            | 105     |
| Work environment temperature (°C) | -40     | 25            | 80      |
| Work environment humidity (%)     | 0.0     | 30            | 95      |

## Precautions

---

- 1) To ensure that the control card is stored during normal operation, make sure the battery on the control card is not loose;
- 2) In order to ensure the long-term stable operation of the system, please try to use the

standard 5V power supply voltage.

Shenzhen Huidu Technology Co., Ltd